



North York Moors
National Park

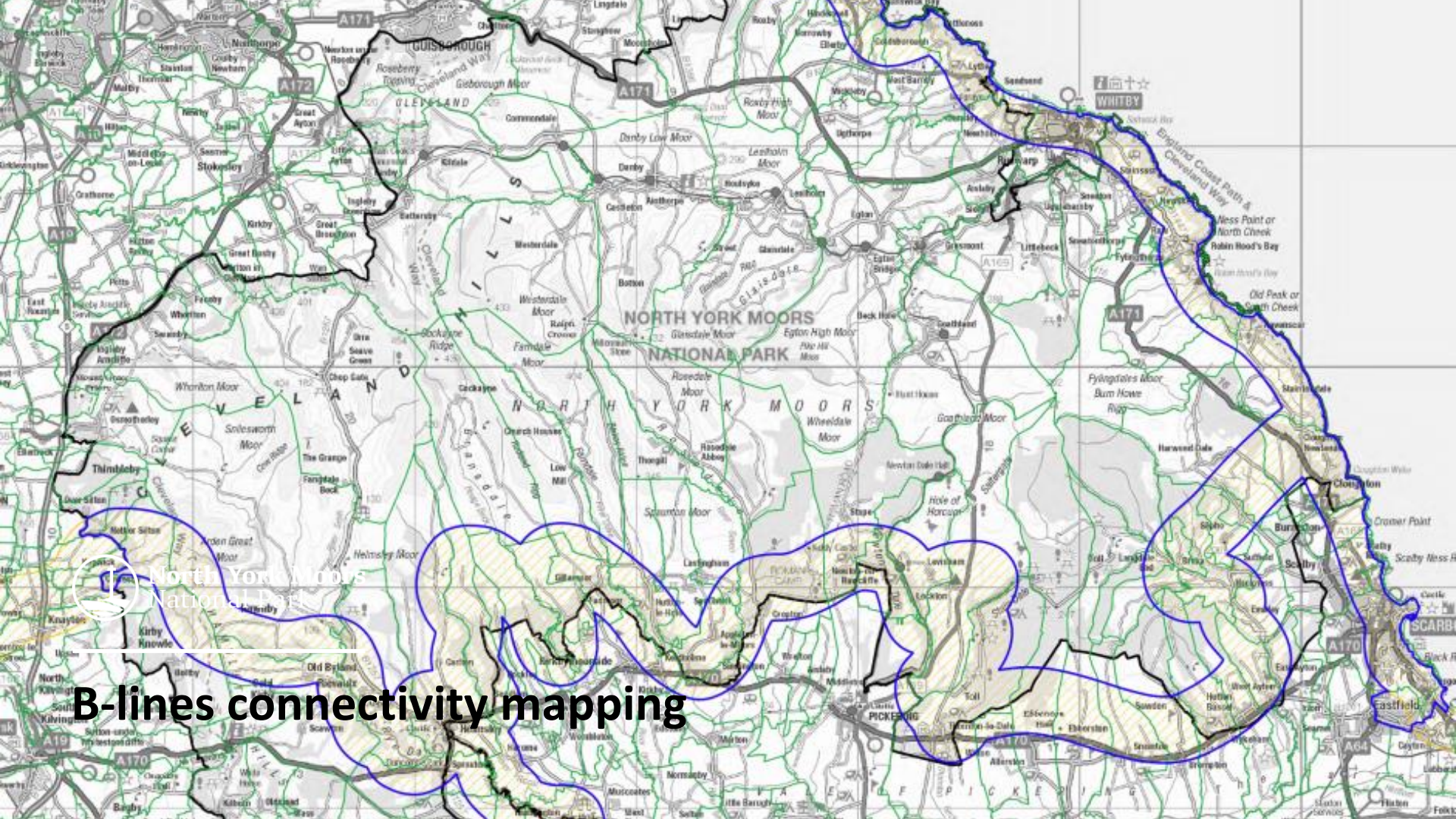
GrubsUp!

Creating, connecting and restoring wildlife-rich habitats for
invertebrates



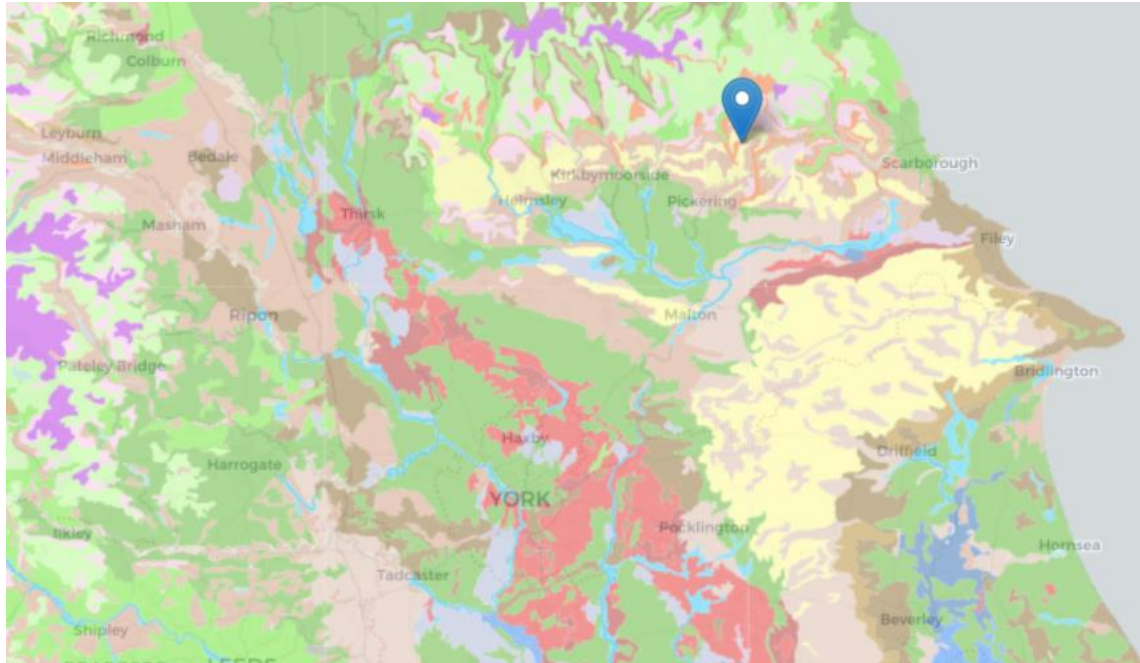
North York Moors
National Park

About the project



B-lines connectivity mapping

LandIS soils map




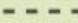


- Shallow lime-rich soils over chalk and limestone.
- Northernmost extent in England.
- Coverage in England: 7%

GrubsUp! Project Area



North York Moors
National Park

VALE OF PICKERING

-  GrubsUp! Project Area
-  North Yorkshire Moors Railway
-  North York Moors National Park
-  Howardian Hills National Landscape

0 1 mile



Aims of the project

- Create, restore, enhance and connect habitat for invertebrates
- Increase the abundance and diversity of invertebrates
- Boost resilience to human and natural pressures
- The project has a community focus, joining places and connecting people to nature at a local level.



Project focus

Grasslands

- Road verges –surveying, management and enhancement
- Species-rich grassland creation and restoration



Woodland and associated flora

- Introducing woodland ground flora into new woodland



Hedgerows

- Encouraging management changes so that hedges are able to produce flowers and fruit
- Introducing hedgerow climbers



Project focus

Wet areas

- Wetland creation- restoring old dew ponds and historic ponds, creating wetland scrapes and wildlife ‘drinking pools’



Traditional Orchards

- Biodiversity hotspots



Landscape Trees

- Habitat connectivity and landscape features
- Next-generation trees for existing parkland and boundary trees

Made-homes for wildlife

- Bird boxes –Owls, swifts, other
- Bat boxes
- Bug hotels



Dark skies- friendly lighting

- Support measures to promote and protect dark skies
 - Dark skies beneficial for protecting biodiversity – particularly the natural habits of invertebrates and other nocturnal fauna.
 - Also benefits for saving money, improving health and well-being and conserving dark landscapes
 - Consider impacts on dark skies when commenting on planning applications
 - If have adopted street lights – ensure dark skies compliant (no upward light spill, <2700K, low wattage) and consider part night lighting.



Volunteering Opportunities

- Local results for local people –enhanced environment for all to enjoy
- Communities working together –small collective actions make a huge impact.
- Volunteering opportunities close to home - surveying, monitoring and practical work
- Community group involvement





North York Moors
National Park

Baseline surveying

Wildflower surveys

- Road verges
 - Re-assessing historically species-rich road verges
 - Baseline surveying verges along the A170 + monitoring existing trial areas
 - Baseline surveying verges in strategic areas for habitat connectivity
 - Health & Safety – individual verge assessments
- Species-rich grassland
 - Degraded SSSIs
 - Degraded lowland meadows
 - Areas with the potential to be species-rich
- Ancient woodland
 - Looking for ancient woodland indicator ground flora –recording location and abundance



Help to create, enhance and connect

Species-rich grassland creation and enhancement



Help to create, enhance and connect

Woodland creation enhancement



Help to create, enhance and connect Hedgerow climbers



Help to create, enhance and connect

Pond creation and restoration



Help to create, enhance and connect Landscape Trees and Orchard fruit tree planting



Volunteering opportunity timeline

Surveying

- ↑ **Mar-Apr:** woodland flora
- ↓ **Late May-early Aug:** road verges & other grassland

Practical

- ↑ **Feb:** grassland restoration
- ↑ **May, Jul & Sep:** wildflower seed collection
- ↓ **Sep-Oct:** pond restoration & wildflower seed sowing/ plug planting
- ↓ **Nov-Feb:** hedgerow climber & landscape & orchard tree planting



North York Moors
National Park

Thank you

Any questions?